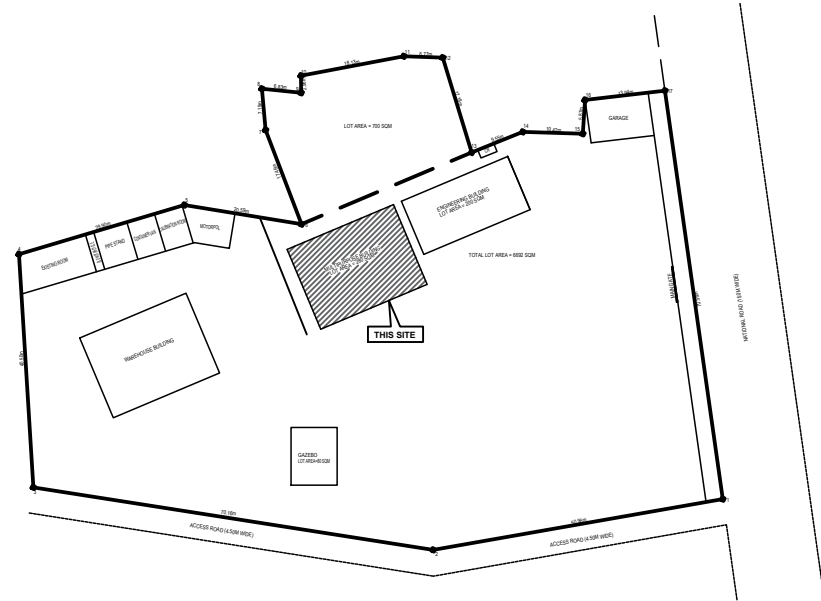



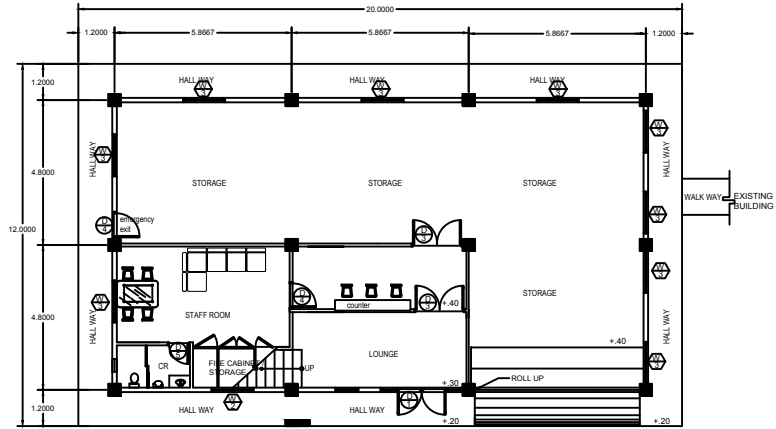


PERSPECTIVE VIEW
SCALE: 1/16

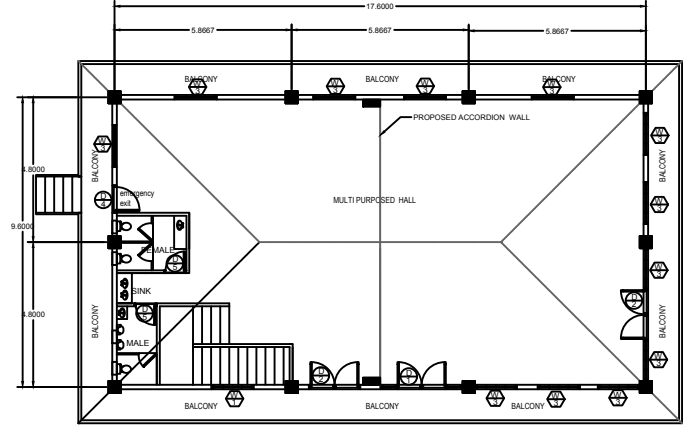


LOCATION PLAN
SCALE: 1/16

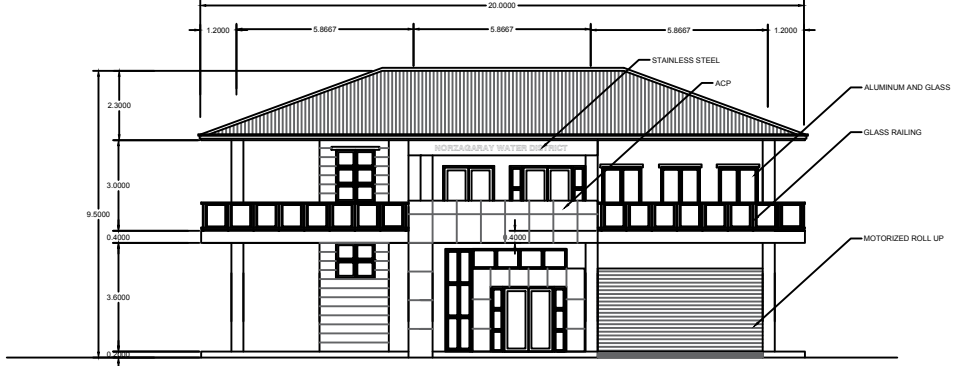
DRAWN -	SURVEYED -	DESIGNED -	CHECKED -	Checked & Certified : -	 NORZAGARAY WATER DISTRICT 1639 P. DELA MERCED ST. POBLACION, NORZAGARAY, BULACAN	DISCLAIMER: <i>Owner's issuance and conformance of this drawing shall not relieve the consultant and its designer of their design responsibilities & liabilities.</i>	CONTRACT DRAWING				
REVISION				Architect/Professional Engineer			PROJECT TITLE: PROCUREMENT OF DESIGN AND CONSTRUCTION OF TWO STOREY REINFORCED CONCRETE MULTIPURPOSE BUILDING	LOCATION: VILLARAMA ST., POBLACION, NORZAGARAY, BULACAN	SHEET CONTENT: PERSPECTIVE VIEW, LOCATION PLAN	SCALE: AS SHOWN	CONTRACT NO. -
REV/DATE	BY	APPROVED BY		PROFESSION :	PTR :	Prepared by:	Checked by:	Approved by:			
				REGISTRATION NO. :	DATE ISSUED :	ENGR. MA. MONICA S. DEL CARMEN Engineering Assistant	ENGR. SILVESTRE P. DE GUZMAN Technical Assistant	ENGR. AIMER B. CRUZ General Manager			
				TIN :	PLACE ISSUED :						



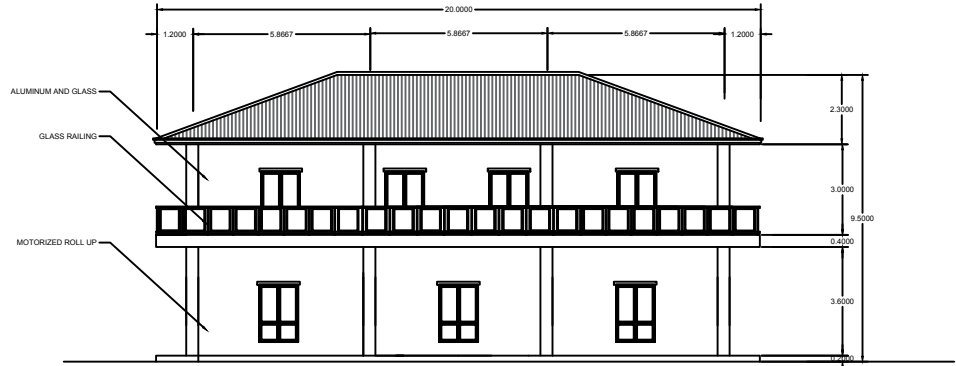
GROUND FLOOR PLAN
SCALE 1:100



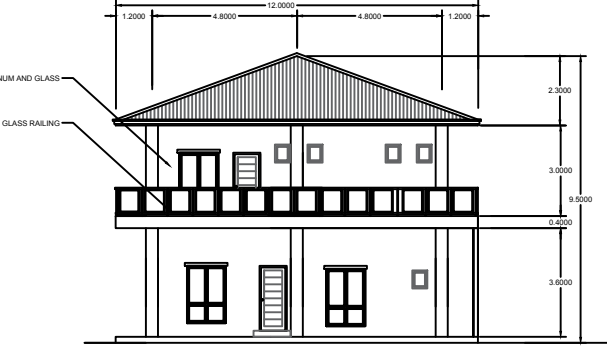
SECOND FLOOR PLAN
SCALE 1:100



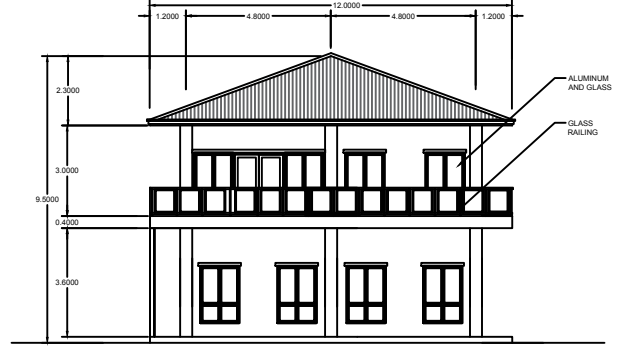
FRONT ELEVATION
SCALE 1:100




REAR ELEVATION
SCALE 1:100

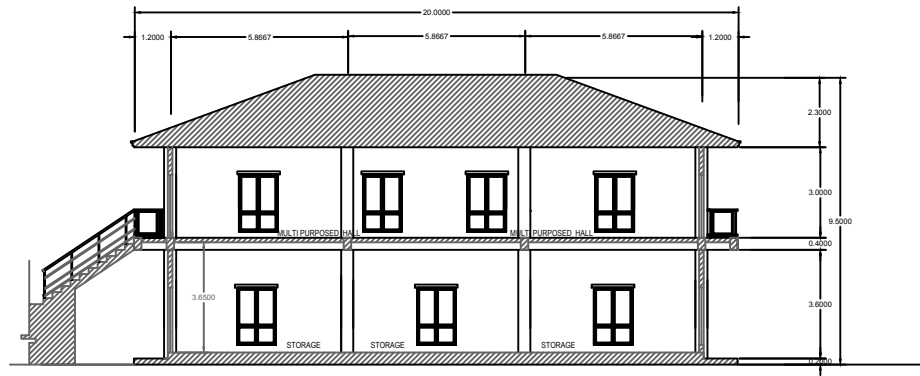


LEFT SIDE ELEVATION
SCALE 1:100

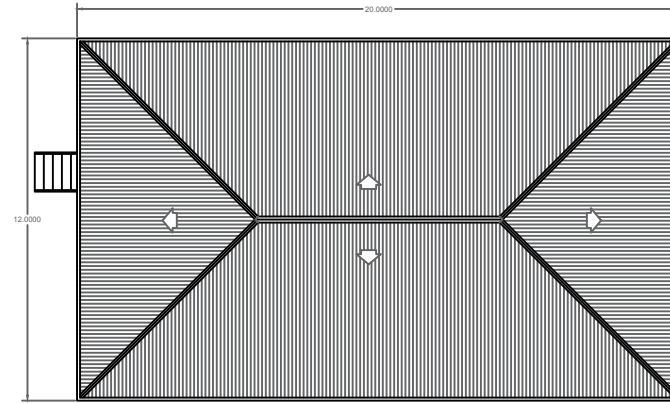


RIGHT SIDE ELEVATION
SCALE 1:100

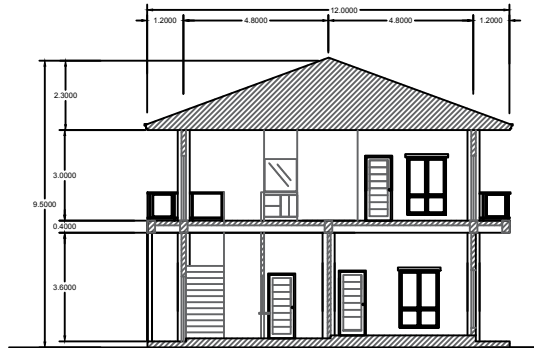
DRAWN	SURVEYED	DESIGNED	CHECKED	Checked & Certified :	 NORZAGARAY WATER DISTRICT 1639 P. DELA MERCED ST. POBLACION, NORZAGARAY, BULACAN	DISCLAIMER: <i>Owner's issuance and conformance of this drawing shall not relieve the consultant and its designer of their design responsibilities & liabilities.</i>	CONTRACT DRAWING				
-	-	-	-	Architect/Professional Engineer			PROJECT TITLE: PROCUREMENT OF DESIGN AND CONSTRUCTION OF TWO STOREY REINFORCED CONCRETE MULTIPURPOSE BUILDING	LOCATION: VILLARAMA ST., POBLACION, NORZAGARAY, BULACAN	SHEET CONTENT: GROUND FLOOR PLAN, SECOND FLOOR PLAN, FRONT ELEVATION, REAR ELEVATION, LEFT SIDE ELEVATION, RIGHT SIDE ELEVATION	SCALE: AS SHOWN	CONTRACT NO. -
REVISION				PROFESSION :	Prepared by:	Checked by:	Approved by:				
REV/DATE	BY	APPROVED BY		PTIR :	ENGR. MA. MONICA S. DEL CARMEN Engineering Assistant	ENGR. SILVESTRE P. DE GUZMAN Technical Assistant	ENGR. AIMER B. CRUZ General Manager				
				REGISTRATION NO. :							
				TIN :							
				PLACE ISSUED :							



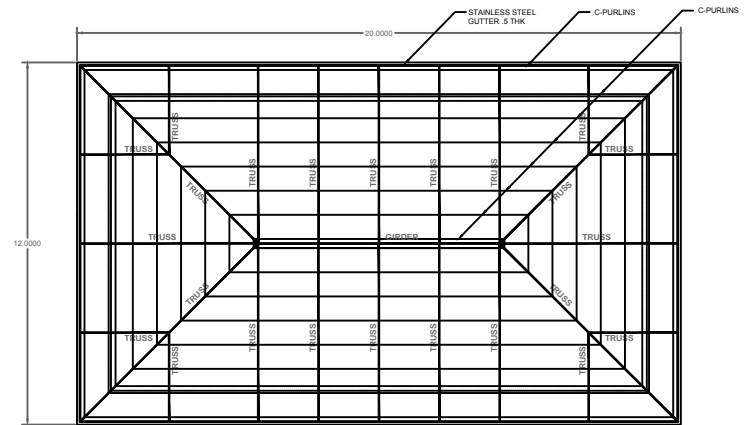
LONGITUDINAL SECTION
SCALE 1:100



ROOF PLAN
SCALE 1:100



CROSS SECTION
SCALE 1:100



ROOF FRAMING PLAN
SCALE 1:100

DRAWN	SURVEYED	DESIGNED	CHECKED	Checked & Certified :	NORZAGARAY WATER DISTRICT			DISCLAIMER:			CONTRACT DRAWING						
-	-	-	-	-	Architect/Professional Engineer			1639 P. DELA MERCED ST. POBLACION, NORZAGARAY, BULACAN			Owner's issuance and conformance of this drawing shall not relieve the consultant and its designer of their design responsibilities & liabilities.			PROJECT TITLE: PROCUREMENT OF DESIGN AND CONSTRUCTION OF TWO STOREY REINFORCED CONCRETE MULTIPURPOSE BUILDING			
REVISION				PROFESSION :	PTR :	Prepared by:	Checked by:	Approved by:	LOCATION: VILLARAMA ST., POBLACION, NORZAGARAY, BULACAN								
REV/DATE	BY	APPROVED BY		REGISTRATION NO. :	DATE ISSUED :	ENGR. MA. MONICA S. DEL CARMEN Engineering Assistant	ENGR. SILVESTRE P. DE GUZMAN Technical Assistant	ENGR. AIMER B. CRUZ General Manager	SHEET CONTENT: LONGITUDINAL SECTION, CROSS SECTION, ROOF PLAN, ROOF FRAMING PLAN								
				TIN :	PLACE ISSUED :				SCALE: AS SHOWN	CONTRACT NO. -	SHEET NO. 3 OF 3	REV. -					